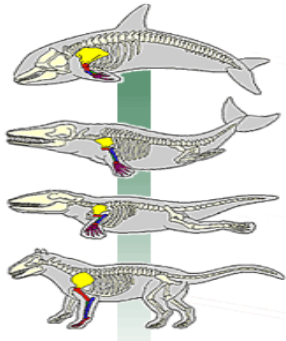
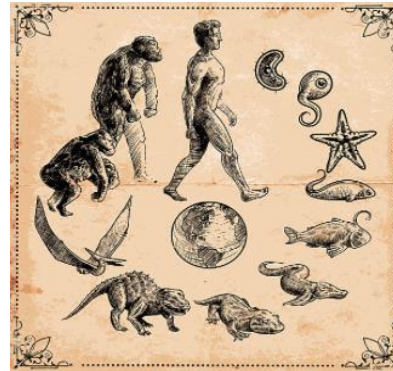


Lesson 6: THE “GRAND THEORY OF EVOLUTION” IS NOT FACT

DARWINIAN EVOLUTION (or “Neo-Darwinian” Evolution) means:
Non-living “stuff” became a living cell ... random changes from one generation to the next ... leading to all the life forms we see today. **No God, just Nature.**



CHANGE FROM ONE KIND OF ANIMAL
TO A NEW KIND



“MOLECULE... TO MAN”

IS THAT REALLY WHAT THE EVIDENCE SHOWS???

- **There are no “TWEENERS” alive today.**

Darwinian Evolution says that simple forms of live evolved into more complex forms. If this really happened, it would still be happening today. There would be animals in a stage of changing (1/2 evolved into something else.)

“Why, if species have descended from other species, ... do we not everywhere see innumerable **transitional forms**? Why is not all of nature in confusion instead of species being, as we see them. Well defined?”
- Charles Darwin

- **Do Fossils show really good evidence for Darwinian Evolution?**
Fossils show animals in the past were fully formed. They “suddenly appear” in the rock layers as well-defined creatures.

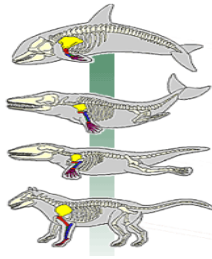
Darwin knew this was a big problem for his theory:
“Those who believe the geological record is in any degree complete, will undoubtedly ... reject my theory... The fossil record assuredly does not show it.”
- Charles Darwin

150 years after Darwin - millions of fossils found. There are still no fossils of “transitional forms” changing from one type of animal to another.

Video <https://youtu.be/20AGi50UNf0>
(9:33) Fossils: Mysterious Origins
(Science Uprising, EP9)



YOUR THOUGHTS:



WHALE "EVOLUTION"

What question(s) could you respectfully ask in school when you are discussing the whale as an example of Darwinian Evolution?

REMEMBER:

Labeling something a "Transitional Form" doesn't make it a FACT.

Always ask... "Fact or Interpretation?"

"Where is the evidence?"



Activity:

Check your homemade "fossils."

Do you see $\frac{1}{2}$ legs $\frac{1}{2}$ wings ... *Lings*?

Do you see $\frac{1}{2}$ scales $\frac{1}{2}$ feathers ... *Sceathers*?

