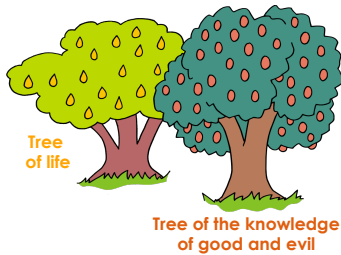


Video:
https://youtu.be/2OChNGBmrGA?si=esYwOj_yN4qeYh_t
 Sin Entered the World by Gospel Project (2:56)



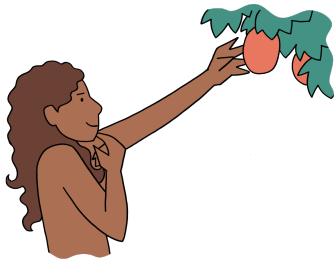
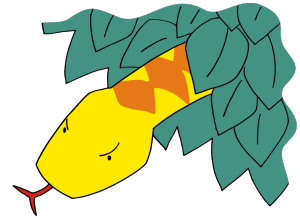
Lesson #3: SIN ENTERS THE WORLD (ADAM & EVE) (Genesis 3:1 – 4:1)

The Bible says that Adam and Eve lived in a beautiful place called the Garden of Eden. They knew God loved them and they even spent time with him when He walked in the garden. Adam and Eve did not wear any clothes, but they were not embarrassed.



There was plenty to eat in the garden. There were many trees with good fruit. In the center grew 2 trees - the Tree of Life and the Tree of Knowledge of Good and Evil. God told Adam and Eve that they must not eat from the Tree of Knowledge of Good and Evil. If they ate from it, they would die.

One animal in the garden was different - a snake. He was clever and tricky. The snake said to Eve, "Did God REALLY say that you must not eat fruit from ANY tree in the garden?" Eve said, "We can eat from any tree in the garden, but God's one rule is that we must never eat from the tree in the middle of the garden. He says that if we even touch it, we will die."

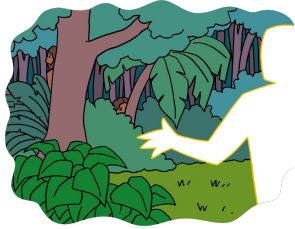
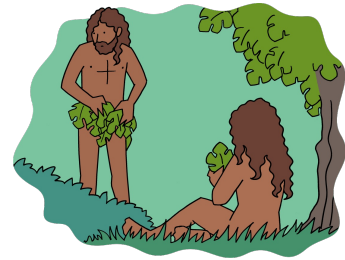


The snake was really the devil. The devil wants to get people to do bad things. So, the snake told the woman a lie. He said, "You will not die! If you eat fruit from that tree, you will know about good and evil. You will be like God." Thinking about and feeling like you want to do something bad is called "temptation." The snake was tempting Eve to do something bad.

Eve did eat the fruit from the Good and Evil Tree. Then she gave some of the fruit to her husband, Adam, and he ate it too. They sinned.



Oh, no! Now Adam and Eve knew they were naked. Now they were embarrassed and wanted to cover themselves so they would stop feeling this way! They sewed leaves together to cover themselves.



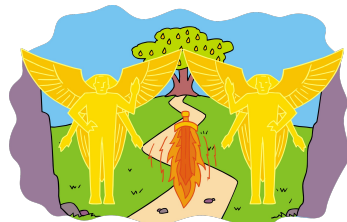
When they heard God walking in the garden, they were so ashamed they hid from Him. "Where are you?" God asked. "We were afraid and naked, so we are hiding," Adam answered.

God knew that they had sinned and eaten from the Tree of the Knowledge of Good and Evil. Adam tried to blame Eve. Eve blamed the snake. Evil had come into the world.



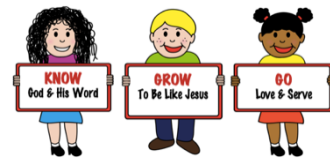
So, God put a curse on that snake. God said it would be the lowest of all animals, crawl on its stomach and would feel like he was eating dust. The devil would always be an enemy to people. But God promised that someday someone from Eve's family would destroy him. (God was telling them about Jesus.)

There was a consequence for the woman. From now on, having a baby would bring her more pain. Her husband would be the ruler over her. Adam had consequences too. There would now be thorns and weeds. Adam would have to sweat and work very hard to make things grow. But the worst punishment of all was that Adam and Eve could no longer live in God's Garden. God made them clothes from animal skins.



God placed Cherubim angels with a flaming sword to guard the gate of God's Garden of Eden. Adam and Eve couldn't go in. They couldn't eat from the Tree of Life anymore. They would start getting older and someday they would die.

The devil still tempts people to sin. But with Jesus as our helper, we can resist the devil. The Bible says, "Give yourselves to God. Stand against the devil, and the devil will run away from you." (James 4:7) God has a great plan to solve our sin problem and bring us back to Him! Jesus rescues us from sin so we can live with God forever!



PRIMARY GRADES COLORING ACTIVITY



UPPER GRADES ACTIVITIES

Temptation in the Garden



"You will not surely die," the serpent said to the woman. "For God knows that when you eat of it your eyes will be opened, and you will be like God, knowing good and evil." Genesis 3:4-5 (NIV)

The puzzle is based on Genesis 3:1-7 (NLT).

X E A T E Z N L L T L S Y G I
 S E R P E N T A O G O X C J P
 G V O T P S N D K V K U H G Y
 O R X K Q D N J Y E Z V C A E
 O X Q F L A F F T E D Q G H T
 D V Z I B N K F Y C R A F T Y
 G E W S I R I N J N C F W K Q
 J W U E F E K B O T R E O D K
 A H F Y R F V F D W B Z M I A
 M N U E U O J I P W S F A E V
 T I I S I O E L L Z I R N P Q
 D R D M T D M Q P O J S K X Q
 F B E D A U X B V P G A D B U
 G G X E L L F T C Q E N W O D
 K R I P S E S T G A R D E N M

KNOW	EYES	GOOD	CRAFTY	ANIMALS
EAT	DIE	TREES	HUSBAND	WISDOM
EVIL	WOMAN	FOOD	FRUIT	GARDEN
MIDDLE	WILD	SERPENT	TOUCH	NAKED

Wordsearch from Sermon4Kids.com



What is SIN? _____

What is God's plan to rescue you from sin?

