

Lesson #11: THE HUMAN EYE... EVIDENCE OF DESIGN

1. THE HUMAN EYE: EVOLUTION'S HARDEST PROBLEM

Video:
https://youtu.be/Z3qP3GfS1N4?si=ct_MMbSi9eMtNaor
 The Human Eye: Evolution's Hardest Problem by Discovery Science

Charles Darwin said that imagining the eye evolved by natural selection seemed "absurd in the highest degree."

Yet, he said that if we could find a series of eyes from the simplest to the most complex, then the objection to his theory should go away.

He said that with numerous changes... "slight, and successive modifications" the simple, imperfect eye, could evolve into a complex, perfect one.

We do find various eyes in animals – from simple light sensing organs to more complex camera eyes. But... was this a result of Evolution?

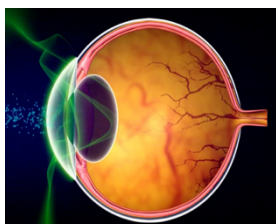
2. COMPLEX EYES EXISTED FROM THE BEGINNING.

The fossil record shows that complex eyes already existed even in the earliest creatures like the **TRILOBITE**. There were also animals with camera eyes like ours. But there are no ancestors to these creatures in the fossils.



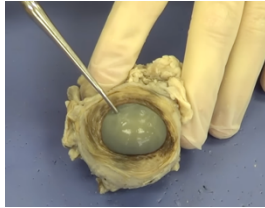
So, there is no evidence that the complex eyes evolved from simpler ones.

3. THE COMPLEXITY OF THE HUMAN EYE SHOWS EVIDENCE OF DESIGN.



Video:
https://youtu.be/RuUj4jh1An4?si=aMhsDG9y_H-rSE83
 The Human Eye Destroys Evolution Theory by Mindverse TV
 Watch till (5:06) Note: There are quotes from the Quran later in this video.

4. **Activity: DISSECT COWS EYE** to notice similar structures.
How could this evolve? All the parts are needed for the eye to work.



Wath this video as we dissect
the cow's eye:

https://youtu.be/6mNs_TcUyHc?si=wxjN2yUhKBw_Pq44

Cow Eye Dissection by
Biologybyme (15:02)

**THE HUMAN EYE...
EVOLVED OR DESIGNED BY GOD...
WHICH IS MORE REASONALBE TO BELIEVE?**

